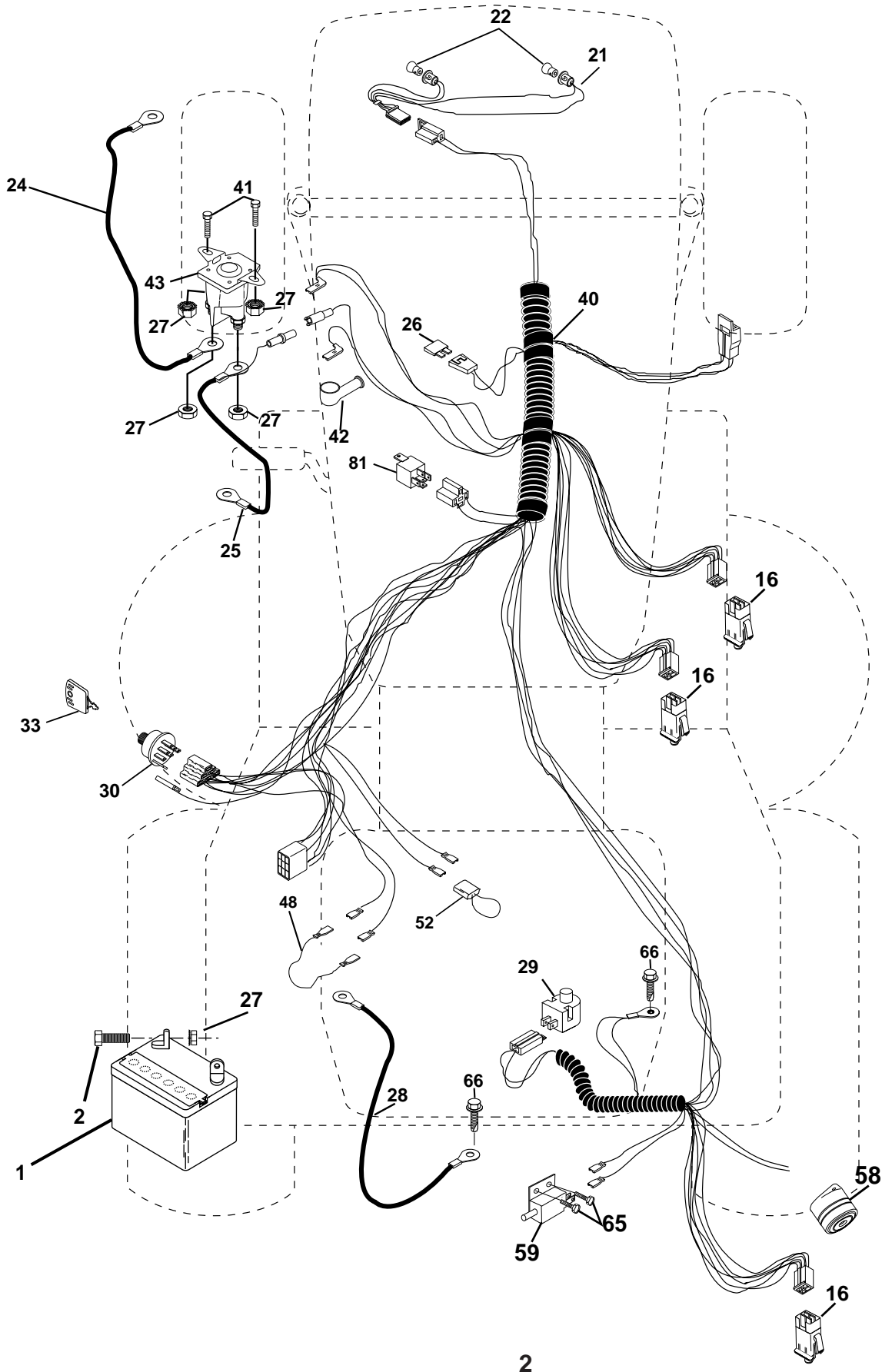


ICT 15

Spare parts
Ersatzteile
Pièces détachées
Reserve onderdelen
Repuestos
Reservdelar

REPAIR PARTS

TRACTOR- -MODEL NO. ICT15 (JICT15B) PRODUCT NO. 954 13 00-41
ELECTRICAL



REPAIR PARTS

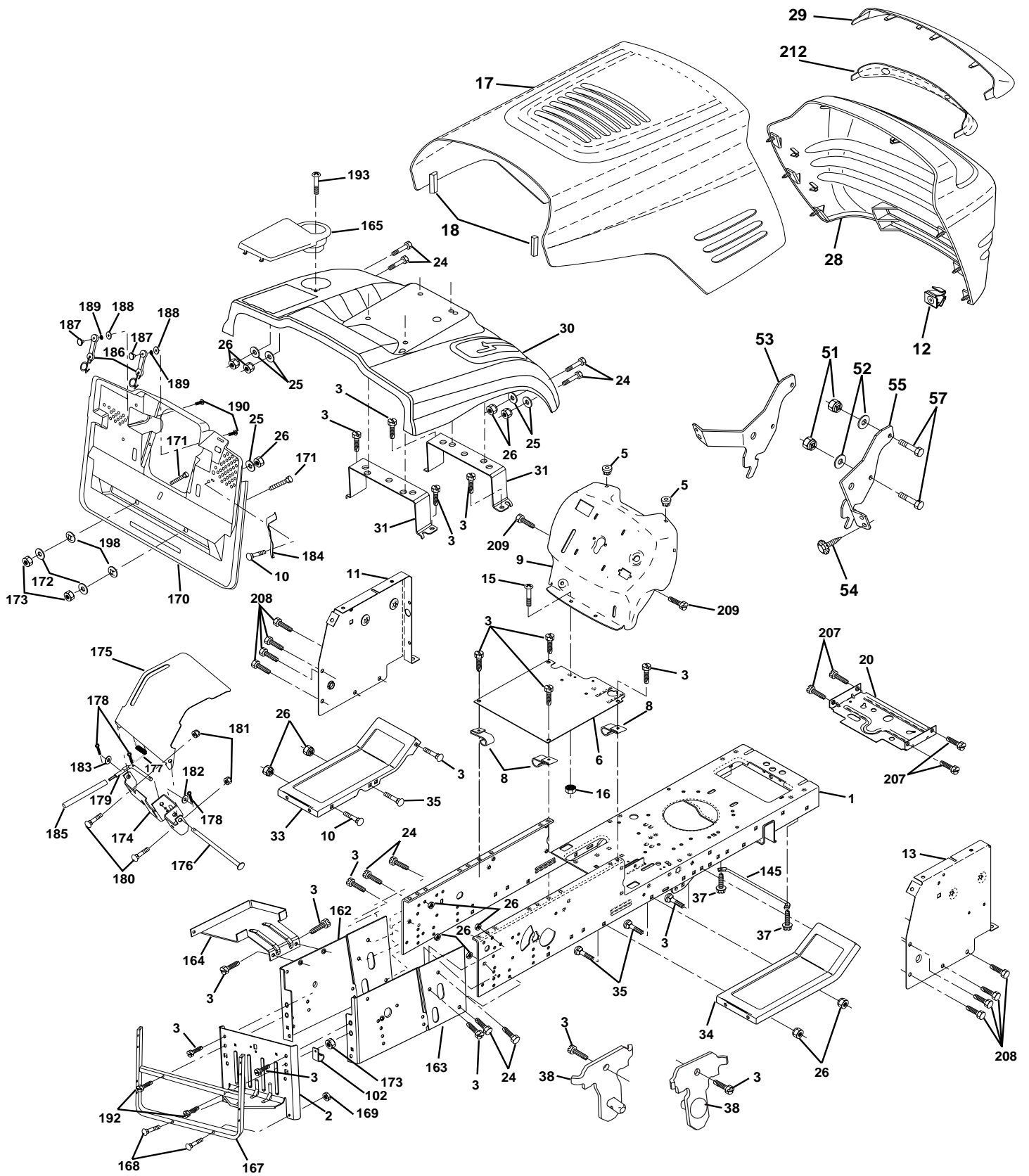
TRACTOR- -MODEL NO. ICT15 (JICT15B) PRODUCT NO. 954 13 00-41
ELECTRICAL

| KEY NO. | PART NO. | DESCRIPTION |
|---------|-----------|-----------------------------------|
| 1 | 532144925 | Battery |
| 2 | 874760412 | Bolt Hex Hd 1/4-20 Unc x 3/4 |
| 16 | 532153664 | Switch Interlock Push-In |
| 21 | 532166182 | Harness Asm Light W/4152J |
| 22 | 532004152 | Bulb Light #1156 |
| 24 | 532124780 | Cable Starter 6Ga 11" Red |
| 25 | 532165987 | Cable Battery Crd 56" Red |
| 26 | 532166180 | Fuse 15 Amp |
| 27 | 873510400 | Nut Keps Hex 1/4-20 Unc |
| 28 | 532127725 | Cable Ground 6Ga 18" Black |
| 29 | 532160784 | Switch Plunger Normal Op Olive |
| 30 | 532163968 | Switch Ignition Delta |
| 33 | 532140401 | Key Ign Molded Delta |
| 40 | 532170164 | Harness Ign Crd Noram |
| 41 | 871110408 | Bolt Flk Fin Hex 1/4-20 Unc x 1/2 |
| 42 | 532131563 | Cover Terminal Red |
| 43 | 532145673 | Solenoid |
| 48 | 532140844 | Adapter Ammeter Rectangular |
| 52 | 532141940 | Protection Wire Loop |
| 58 | 532169419 | Buzzer Crd |
| 59 | 532166299 | Switch FBI CRD |
| 65 | 817211008 | Screw Slftp #10-16 x 1/2 Ty-Ab |
| 66 | 817490608 | Screw Thdrol 3/8-16 x 1/2 Ty-Tt |
| 81 | 532109748 | Relay Asm |

NOTE: All component dimensions given in U.S. inches.
1 inch = 25.4 mm.

REPAIR PARTS

TRACTOR- -MODEL NO. ICT15 (JICT15B) PRODUCT NO. 954 13 00-41
CHASSIS AND ENCLOSURES



REPAIR PARTS

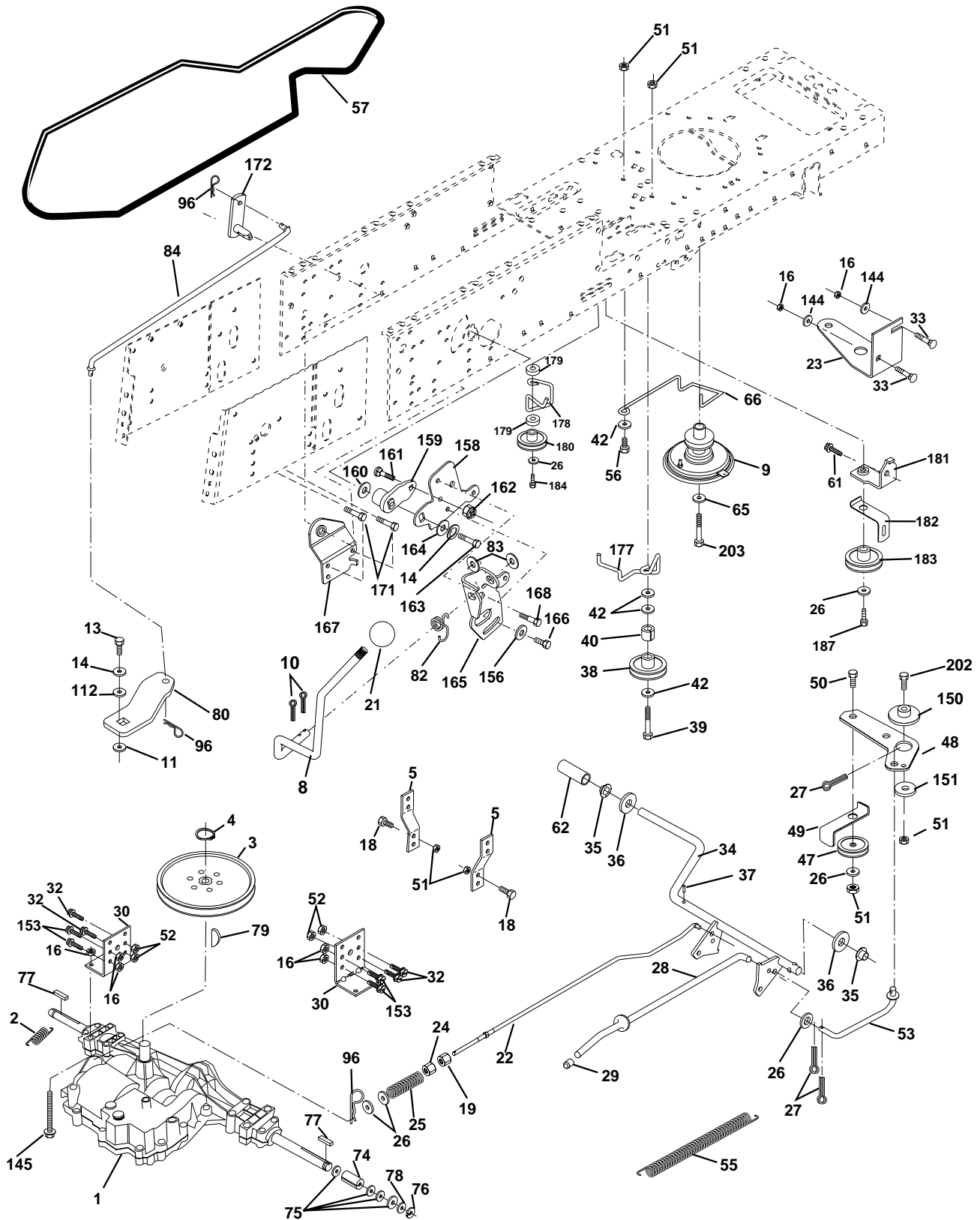
TRACTOR- -MODEL NO. ICT15 (JICT15B) PRODUCT NO. 954 13 00-41 CHASSIS AND ENCLOSURES

| KEY NO. | PART NO. | DESCRIPTION | KEY NO. | PART NO. | DESCRIPTION |
|---------|-----------|--|---------|-----------|------------------------------------|
| 1 | 532169831 | Chassis Assembly | 162 | 532165672 | Bracket Exten Chassis Lh CRD |
| 2 | 532165606 | Drawbar | 163 | 532165673 | Bracket Exten Chassis Rh CRD |
| 3 | 817060612 | Screw 3/8-16 x .75 smqml Tap/R.Z | 164 | 532165605 | Support Battery CRD |
| 5 | 532155272 | Bumper Hood/Dash | 165 | 532168407 | Cover Battery CRD Lt |
| 6 | 532155923 | Saddle | 167 | 532165779 | Support Asm. Backplate WLDMNT |
| 8 | 532126471 | Clip Insulator 13/32 Mtg. Hole | 168 | 872050412 | Bolt, RDHD SHT NK 1/4-20 x 1-1/2 |
| 9 | 532172243 | Dash | 169 | 532123976 | Nut, Lock 1/4 LGE FLG Gr. 5 Zinc |
| 10 | 872140608 | Bolt, Carriage 3/8-16 x 3/4 | 170 | 532165607 | Cover, Backplate Plastic Black |
| 11 | 532155927 | Panel, Dash, L.H. | 171 | 874520640 | Bolt Hex 3/8-16 x 2-1/2 Gr. 5 |
| 12 | 532145660 | Clip Tinnerman Grille P/L | 172 | 819132016 | Washer 13/32 x 1-1/4 x 16 Ga. |
| 13 | 532172108 | Panel, Asm. Dash R.H. | 173 | 873510600 | Nut, Keps Hex 3/8-16 UNC |
| 15 | 874180512 | Screw, Machine, Truss Head 5/16-18 UNC x 3/4 | 174 | 532165939 | Bracket Switch FBI CRD |
| 16 | 873510500 | Nut | 175 | 532166212 | Guard Door Rear CRD |
| 17 | 532150760 | Hood Assembly | 176 | 532128600 | Pin Hinge Pivot |
| 18 | 532126938 | Bumper Hood | 177 | 532132796 | Spring Bagger Top LH Black |
| 20 | 532156437 | Plate Mtg. Battery/Fuel Tank | 178 | 876020312 | Pin Cotter 3/32 x 3/4 Cad Zinc |
| 24 | 874780616 | Bolt | 179 | 532165942 | Rod Pivot FBI CRD |
| 25 | 819131312 | Washer 13/32 x 13/16 x 12 Gauge | 180 | 874760516 | Bolt Hex HD 5/16-18 UNC x 1 |
| 26 | 873800600 | Nut | 181 | 873680500 | Nut Crownlock 5/16-18 |
| 28 | 532169509 | Grille PL | 182 | 532138200 | Washer .385 x .625 x 11 Ga. |
| 29 | 532166603 | Lens, Grille | 183 | 819131316 | Washer 13/32 x 13/16 x 16 Ga. |
| 30 | 532168796 | Fender | 184 | 532166139 | Bracket Actuator Bagger CRD |
| 31 | 532165156 | Bracket, Fender Support | 185 | 532165940 | Tube Lever Switch FBI CRD |
| 33 | 532149139 | Footrest, L.H. | 186 | 532160793 | Latch Asm Mulch/Bagger |
| 34 | 532149140 | Footrest, R.H. | 187 | 532125004 | Nut Weld |
| 35 | 872110606 | Bolt | 188 | 819061216 | Washer #10 |
| 37 | 817490508 | Screw Thdrol 5/16-18 x 1/2 TYT | 189 | 810071000 | Washer Lock #10 |
| 38 | 532169834 | Pivot Bracket Assembly | 190 | 871161010 | Washer Truss Head Phil 10-24 x 5/8 |
| 51 | 873800400 | Nut Lock w/Insert 1/4-20 UNC | 192 | 817490624 | Screw Thdrol 3/8-16 x 1-1/2 |
| 52 | 819091416 | Washer 9/32 x 7/8 x 16 Ga. | 193 | 817070412 | Screw Truss 1/4-20 x 3/4 |
| 53 | 532145201 | Bracket Grille Pick-off LH | 198 | 532168937 | Nut Push |
| 54 | 532161464 | Screw Hex Wshd 8-18 x 7/8 | 207 | 817670508 | Screw Thdrol 5/16-18 x 1/2 |
| 55 | 532145202 | Bracket Grille Pick-off RH | 208 | 817670608 | Screw Thdrol 3/8-16 x 1/2 |
| 57 | 874780412 | Bolt, Fin Hex 1/4-20 UNC x .75 | 209 | 817000612 | Screw Hex Wsh Thdrol 3/8-16 |
| 102 | 532124996 | Clip Line Fuel 13/32 Mtg Hole | -- | 532005479 | Plug, Button |
| 145 | 532156524 | Rod Pivot Chassis/Hood | | | |

NOTE: All component dimensions given in U.S. inches.
1 inch = 25.4 mm.

REPAIR PARTS

TRACTOR- -MODEL NO. ICT15 (JICT15B) PRODUCT NO. 954 13 00-41
DRIVE



REPAIR PARTS

TRACTOR- -MODEL NO. ICT15 (JICT15B) PRODUCT NO. 954 13 00-41

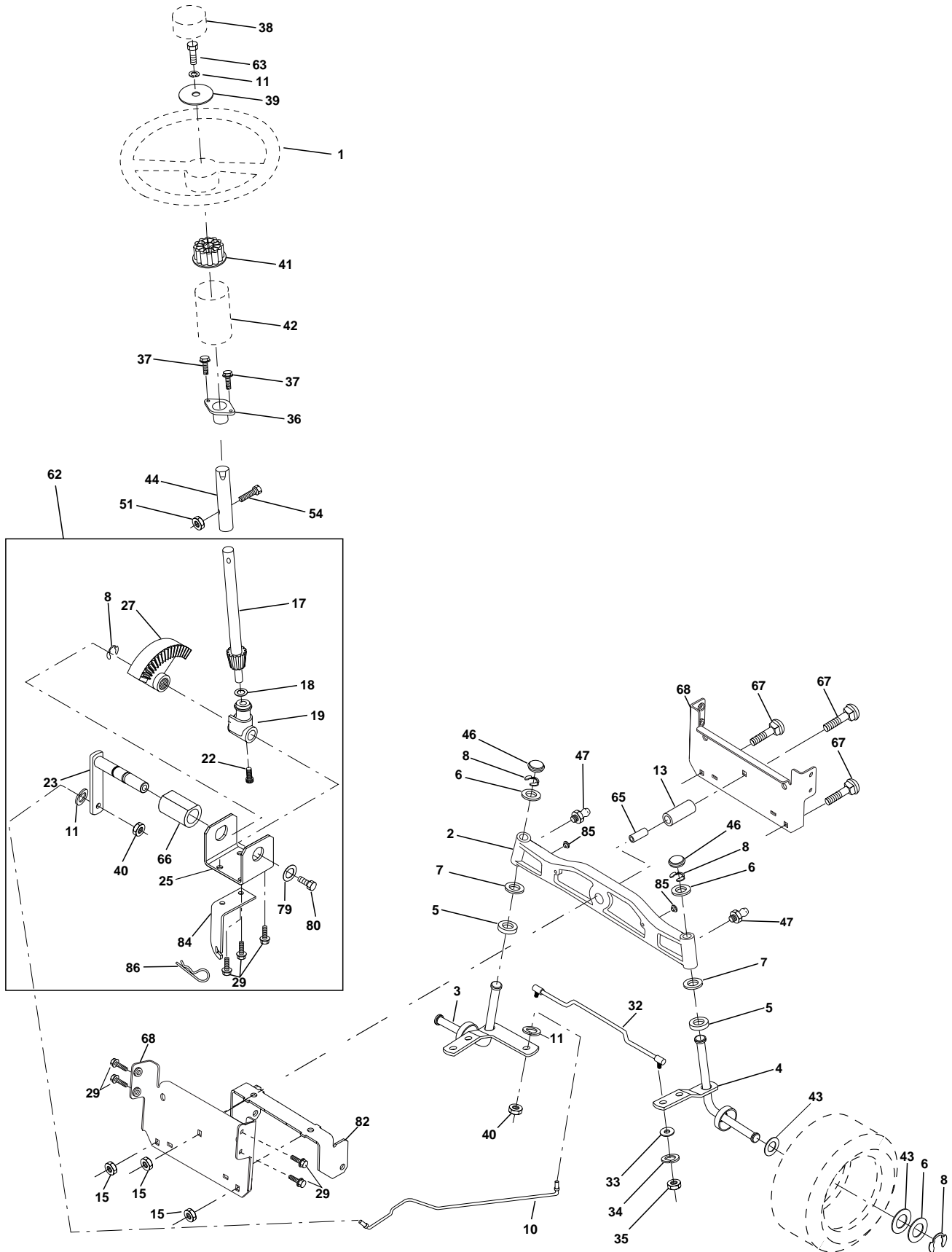
DRIVE

| KEY NO. | PART NO. | DESCRIPTION | KEY NO. | PART NO. | DESCRIPTION |
|---------|-----------|---|---------|-----------|------------------------------------|
| 1 | ----- | Transaxle Peerless 206-546 (Order parts from transaxle manufacturer) | 62 | 532124872 | Cover, Pedal |
| 2 | 532146682 | Spring Brake Return | 65 | 810040700 | Washer |
| 3 | 532165999 | Pulley Transaxle | 66 | 532154778 | Keeper, Belt Engine F-Proof |
| 4 | 812000028 | Ring Retainer #5100-62 | 74 | 532137057 | Spacer Axle |
| 5 | 532121520 | Strap torque 30 degrees | 75 | 532121749 | Washer 25/32 x 1-1/4 x 16 Ga. |
| 8 | 532165619 | Rod Shift Fender Adjust Lt | 76 | 812000001 | Ring, E |
| 9 | 532170163 | Clutch Noram | 77 | 532123583 | Key, Square |
| 10 | 876020416 | Pin, Cotter 1/8 x 1 | 78 | 532121748 | Washer 25/32 x 1-5/8 x 16 Ga. |
| 11 | 532105701 | Washer Plate Shf .3888 sq hole | 79 | 532125096 | Key Woodruff |
| 13 | 874550412 | Bolt 1/4-28 Unf Gr 8 w/patch | 80 | 532145090 | Arm Shift PMST 20" Tires |
| 14 | 810040400 | Washer, Lock Hvy Helical | 82 | 532123782 | Spring, Torsion |
| 16 | 873800500 | Nut, Lock Hex w/Ins 5/16-18 UNC | 83 | 819171216 | Washer 17/32 x 3/4 x 16 Ga. |
| 18 | 874780616 | Bolt Hex 3/8-16 UNC x 1 Gr.5 | 84 | 532165621 | Link Shift CRD Pmst 18" Tires |
| 19 | 873800600 | Nut, Lock Hex w/Wsh 3/8-16 UNC | 96 | 532124788 | Spring, Retainer 1" |
| 21 | 532130564 | Knob Deluxe 1/2-13unc Blk/Red | 112 | 819091210 | Washer 9/32 x 3/4 x 10 Ga. |
| 22 | 532165811 | Rod, Brake CRD 0650 | 144 | 819111016 | Washer 11/32 x 5/8 x 16Ga. |
| 23 | 532170017 | Bracket Clutch Noram | 145 | 874490540 | Bolt Hex FGHD 5/16-18 x Gr 5 |
| 24 | 873350600 | Nut | 150 | 532165850 | Bushing, Bellcrank Grnd Dr |
| 25 | 532106888 | Spring, Rod, Brake | 151 | 819133210 | Washer 13/32 x 2 x 10 Ga. |
| 26 | 819131316 | Washer 13/32 x 13/16 x 16 Ga. | 153 | 874760516 | Bolt Hex Hd 5/16-18 Unc x 1 |
| 27 | 876020412 | Pin, Cotter 1/8 x 3/4 | 156 | 532166002 | Washer Srred 5/16 ID x 1.125 |
| 28 | 532145204 | Rod, Parking Brake | 158 | 532165589 | Bracket Shift Mount |
| 29 | 532071673 | Cap, Parking Brake | 159 | 532165494 | Hub Tapered Flange Shift Lt |
| 30 | 532130807 | Bracket, Mfg. Transaxle | 161 | 872140406 | Bolt Rdhd Sqnk 1/4-20 x 3/4 Gr 5 |
| 32 | 874760512 | Bolt Hex 5/16-18 UNC x 3/4 | 162 | 873680400 | Nut Crownlock 1/4-20 Unc |
| 33 | 872140506 | Bolt Rdhd Sqnk 5/16-18 Unc x 3/4 | 163 | 874780416 | Bolt Hex Fin 1/4-20 Unc x 1 Gr 5 |
| 34 | 532165496 | Shaft, Asm Pedal Foot CRD | 164 | 819091010 | Washer 5/8 x .281 x 10 Ga. |
| 35 | 532120183 | Bearing, Nylon | 165 | 532165623 | Bracket Pivot Lever |
| 36 | 819211616 | Washer 21/32 x 1 x 16 Ga. | 166 | 532166880 | Screw 5/16-18 x 5/8 |
| 37 | 532124963 | Pin, Roll 3/16 x 1" | 167 | 532165588 | Bracket Support Shift CRD |
| 38 | 532165936 | Pulley, Flat | 168 | 532165492 | Bolt Shoulder 5/16-18 x .561 |
| 39 | 872110622 | Bolt Rdhd 3/8-16 x 2-3/4 | 171 | 817490608 | Screw Thdrol 3/8-16 x 1/2 Ty-Tt |
| 40 | 532124965 | Spacer, Split 395 x 59 Bzp | 172 | 532165635 | Shaft Asm Shift Front CRD PMST |
| 42 | 819131312 | Washer 13/32 x 13/16 x 12 Ga. | 177 | 532165932 | Keeper Flat Idler 3.06" CRD |
| 47 | 532127783 | Pulley, Idler, V Groove Plasitc | 178 | 532165933 | Keeper Belt Idler 1.88" CRD |
| 48 | 532154407 | Bellcrank Clutch Grnd Drv | 179 | 532120958 | Washer Sintered |
| 49 | 532123205 | Retainer, Belt Style Spring | 180 | 532165630 | Pulley Flat Composite 3.06" |
| 50 | 874760624 | Bolt Hex Hd 3/8-16 UNC x 1-1/2 | 181 | 532165797 | Bracket Idler Ground Drive CRD |
| 51 | 873680600 | Nut, Crownlock 3/8-16 UNC | 182 | 532165634 | Keeper Belt 2.5" Od V-Idler CRD |
| 52 | 873680500 | Nut Crownlock 5/16-18 | 183 | 532165626 | Pulley V-Idler 2.50" Od CRD |
| 53 | 532105710 | Link, Clutch 7.66 | 184 | 817490644 | Screw Hexwsh Thdrol 3/8-16 x 2-3/4 |
| 55 | 532105709 | Spring, Return, Clutch | 187 | 817490620 | Screw Thdrol 3/8-16 x 1-1/4 |
| 56 | 874760620 | Bolt, Hex 3/8-16 UNC x 1-1/4 | 198 | 532169593 | Washer Nyl 7/8ID x .105 |
| 57 | 531008023 | V-Belt Kev PMST CRD | 202 | 873110612 | Bolt Carr Sh 3/8-16 x 1-1/2 Gr.5 |
| 61 | 817060612 | Screw 3/8-16 x 3/4 Smgml Tap/R.Z | 203 | 871170780 | Bolt Hex 7/16-20 x 5 |

NOTE: All component dimensions given in U.S. inches
1 inch = 25.4 mm

REPAIR PARTS

TRACTOR- -MODEL NO. ICT15 (JICT15B) PRODUCT NO. 954 13 00-41
STEERING ASSEMBLY



REPAIR PARTS

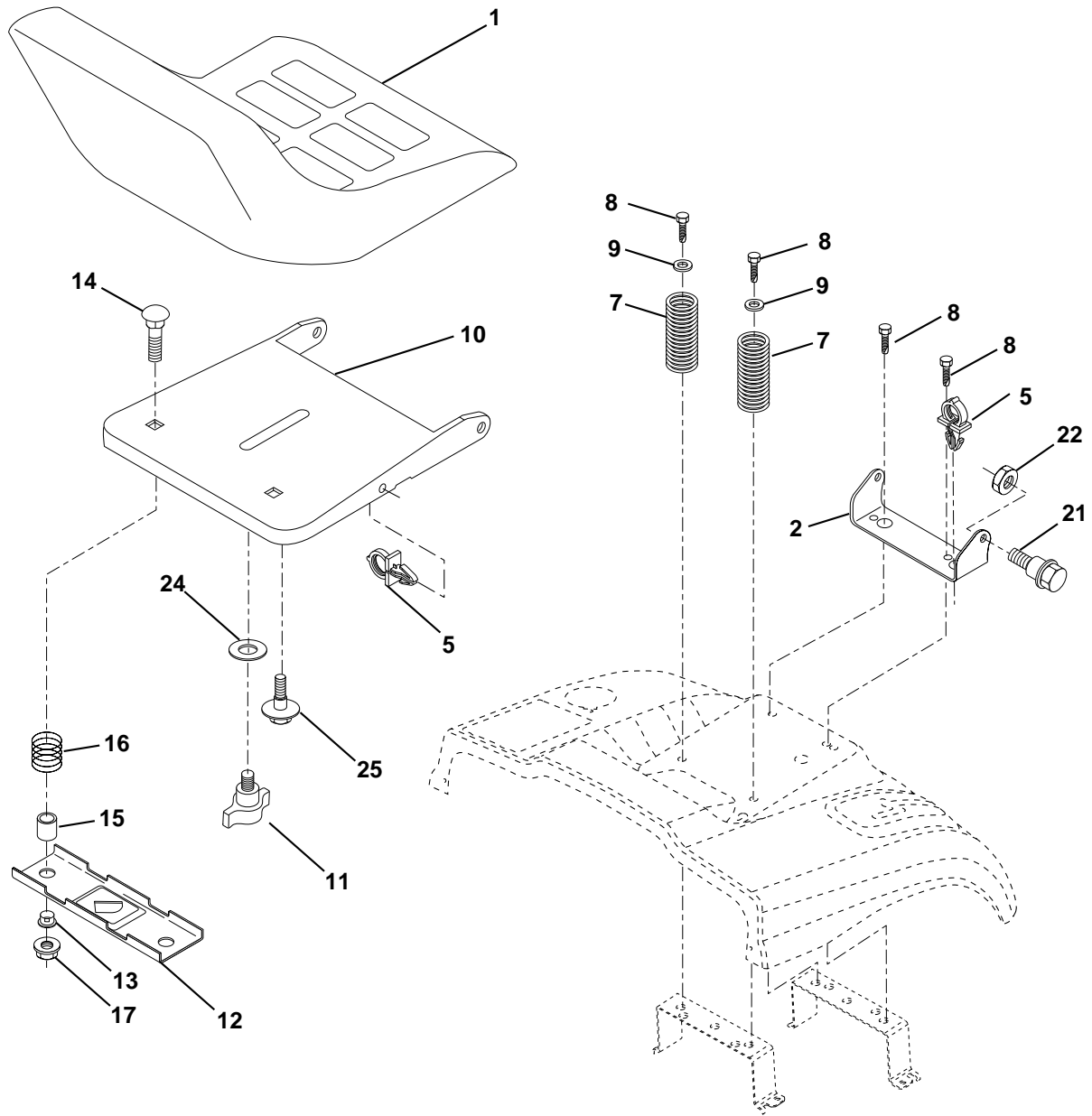
TRACTOR- -MODEL NO. ICT15 (JICT15B) PRODUCT NO. 954 13 00-41 STEERING ASSEMBLY

| KEY NO. | PART NO. | DESCRIPTION |
|---------|-----------|------------------------------------|
| 1 | 532172092 | Steering Wheel |
| 2 | 532165854 | Front Axle Assembly |
| 3 | 532169840 | Spindle Assembly, L.H. |
| 4 | 532169839 | Spindle Assembly, R.H. |
| 5 | 532124931 | Bearing, Race, Thrust, Hardened |
| 6 | 532121748 | Washer 25/32 x 1-5/8 x 16 Gauge |
| 7 | 819272016 | Washer 27/32 x 1-1/4 x 16 Gauge |
| 8 | 812000029 | Ring, Klip |
| 10 | 532169832 | Link, Drag |
| 11 | 810040600 | Washer, Lock |
| 13 | 532136518 | Spacer Axle |
| 15 | 532145212 | Nut, Hex Lock, Flange |
| 17 | 532156546 | Shaft Assembly, Steering |
| 18 | 532057079 | Washer, Thrust .515 x .750 x .033 |
| 19 | 532160395 | Support, Shaft |
| 22 | 532165857 | Screw Hex Wshhd Torx |
| 23 | 532165851 | Pittman Shaft Assembly |
| 25 | 532154406 | Bracket, Steering |
| 27 | 532136874 | Gear, Sector |
| 29 | 817060612 | Screw, 3/8-16 x 3/4 Smgml Tap/R.Z |
| 32 | 532170162 | Rod, Tie |
| 33 | 819111216 | Washer 11/32 x 3/4 x 16 Ga. |
| 34 | 810040500 | Washer Lock Hvy Hlcl Spr 5/16 |
| 35 | 873810500 | Locknut 5/16-24 Unf |
| 36 | 532155099 | Bushing, Steering |
| 37 | 532152927 | Screw TT #10-32 x 5 x 3/8 Flange |
| 38 | 532172093 | Cap Wheel Steering |
| 39 | 819132411 | Washer 13/32 x 1-1/2 x 11 Ga. |
| 40 | 532124701 | Nut Lock Center 3/8-24 Unf |
| 41 | 532159945 | Adaptor, Steering Wheel |
| 42 | 532169633 | Boot, Steering Dash P/L Mtl |
| 43 | 532121749 | Washer 25/32 x 1-1/4 x 16 Gauge |
| 44 | 532153720 | Extension Steering Non-Adjust |
| 46 | 532121232 | Cap, Spindle |
| 47 | 532124836 | Fitting, Grease |
| 51 | 873800500 | Nut Lock Hx W/Ins 5/16-18 UNC |
| 54 | 874780520 | Bolt Fin Hex 5/16-18 UNC x 1-1/4 |
| 62 | 532167902 | Kit, Steering Assembly, Service |
| 63 | 874780616 | Bolt Fin Hex 3/8-16 unc. x 1 Gr. 5 |
| 65 | 532160367 | Spacer Axle |
| 66 | 532154404 | Bearing Arm Pittman |
| 67 | 872140618 | Bolt Rdhd Sq 3/8-16unc x 2-1/4 |
| 68 | 532169827 | Brace Axle |
| 79 | 819132012 | Washer 13/32 x 1-1/4 x 12 Ga |
| 80 | 874950612 | Bolt Hex Nylon 3/8-16 x 3/4 |
| 82 | 532169835 | Bracket Susp Chassis |
| 84 | 532170016 | Bracket Cable Clutch Chassis |
| 85 | 532133835 | Fastener Christmas Tree |

NOTE: All component dimensions given in U.S. inches.
1 inch = 25.4 mm.

REPAIR PARTS

TRACTOR- -MODEL NO. ICT15 (JICT15B) PRODUCT NO. 954 13 00-41
SEAT ASSEMBLY



| KEY NO. | PART NO. | DESCRIPTION |
|---------|-----------|----------------------------------|
| 1 | 532140118 | Seat |
| 2 | 532140551 | Bracket Pnt Pivot Seat (blk) |
| 5 | 532145006 | Clip Push In Hinged |
| 7 | 532124181 | Spring Seat Cprsn 2 250 Blk Zi |
| 8 | 817000616 | Screw 3/8-16 X 1.5 Smgml Tap/R.Z |
| 9 | 819131614 | Washer 13/32 X 1 X 14 Ga |
| 10 | 532155925 | Pan Pnt Seat (blk) |
| 11 | 532166369 | Knob Seat Adj. Wingnut |
| 12 | 532121246 | Bracket Pnt Mounting Switch |
| 13 | 532121248 | Bushing Snap Blk Nyl 50 Id |

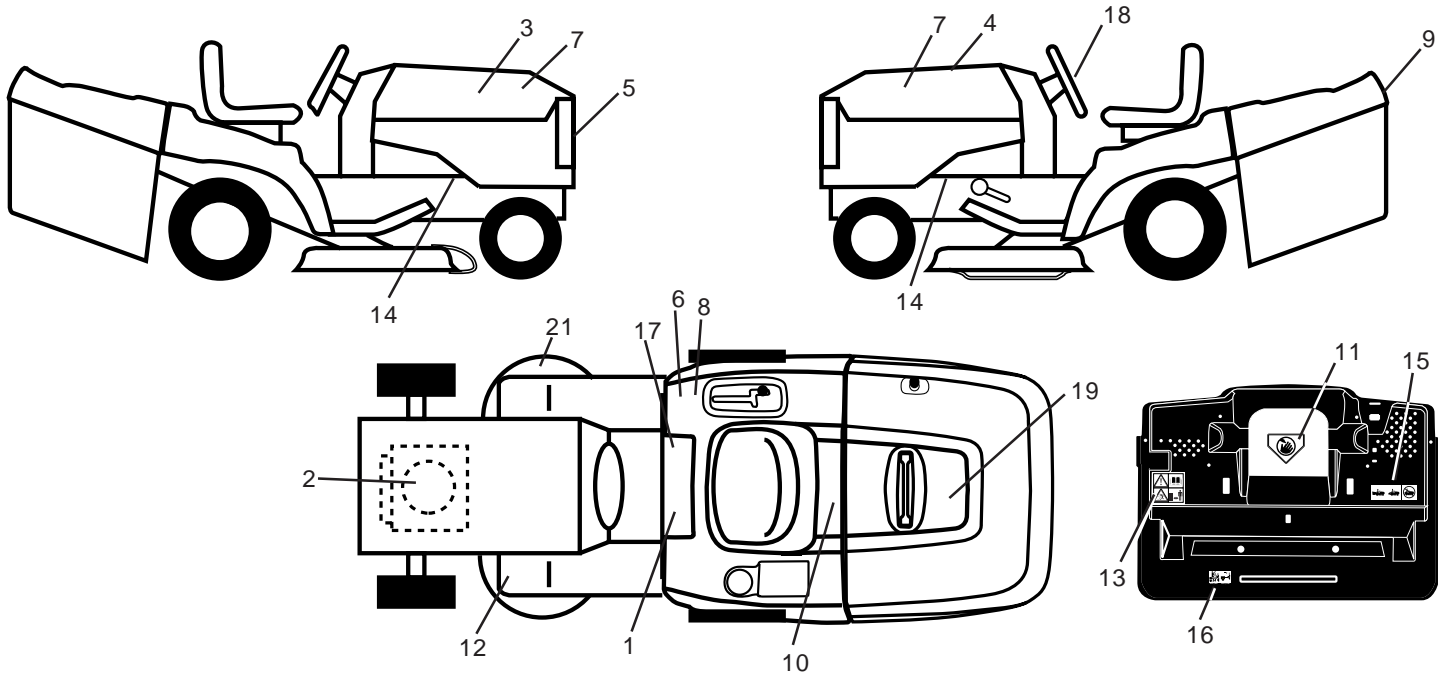
| KEY NO. | PART NO. | DESCRIPTION |
|---------|-----------|--------------------------------|
| 14 | 872050412 | Bolt Rdhd Sht Nk 1/4-20x1-1/2 |
| 15 | 532121249 | Spacer Split |
| 16 | 532123740 | Spring Cprsn Plate SW 1.310 Ga |
| 17 | 532123976 | Nut Lock 1/4 Lge Flg Gr 5 Zinc |
| 21 | 532171852 | Bolt Shoulder 5/16-18 Unc-2A |
| 22 | 873800500 | Nut Hex Lock w/Ins 5/16-18 |
| 24 | 819171912 | Washer 17/32 X 1-3/16 X 12 Ga. |
| 25 | 532127018 | Bolt Shoulder 5/16-18 X 62 |

NOTE: All component dimensions given in U.S. inches.
1 inch = 25.4 mm

REPAIR PARTS

TRACTOR- -MODEL NO. ICT15 (JICT15B) PRODUCT NO. 954 13 00-41

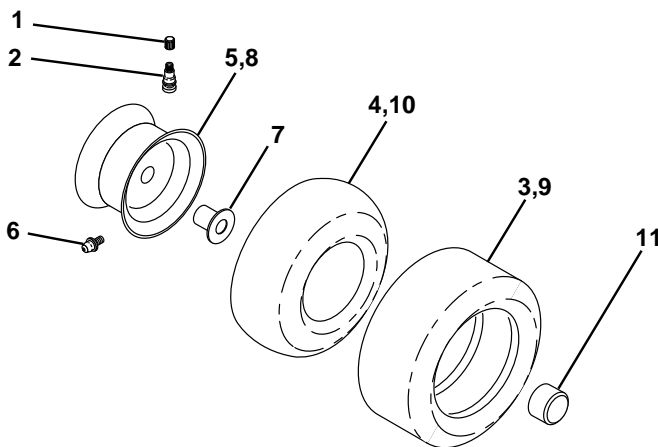
DECALS



| KEY NO. | PART NO. | DESCRIPTION |
|---------|-----------|-------------------------------|
| 1 | 532145498 | Decal Read Owner's Manual Sym |
| 2 | 532170846 | Decal Hp Engine |
| 3 | 532170529 | Decal Hood Rh |
| 4 | 532170530 | Decal Hood Lh |
| 5 | 532152262 | Decal Grille Logo |
| 6 | 532126187 | Decal 100 DBA |
| 7 | 532162927 | Decal Hood Insert |
| 8 | 532145437 | Decal Europe Stand Ce |
| 9 | 532141761 | Decal Fender Logo |
| 10 | 532145005 | Decal Bat Dan/Poi P/L Sym Wpn |
| 11 | 532145494 | Decal Mower Cut Finger Symbol |
| 12 | 532159737 | Decal Brake/Clutch Symbol Lt |

| KEY NO. | PART NO. | DESCRIPTION |
|---------|-----------|------------------------------|
| 13 | 532166959 | Decal Warn Back Plate CRD |
| 14 | 532159736 | Decal Chassis Hot Muffler |
| 15 | 532166961 | Decal Oper Bag Presence CRD |
| 16 | 532162598 | Decal Drawbar Load Limit |
| 17 | 532140837 | Decal Saddle Brake Parking |
| 18 | 532170565 | Decal Ins Strg Whl |
| 19 | 532170654 | Decal Bagger Top CRD Sup.Vac |
| 21 | 532166286 | Decal Deck Sch 92 CRD |
| — | 532138311 | Decal Lift Handle |
| — | 532171237 | Pad Footrest |
| — | 532173392 | Manual Operator's (Euro) |
| — | 532173393 | Manual Operator's (Scand) |

WHEELS & TIRES

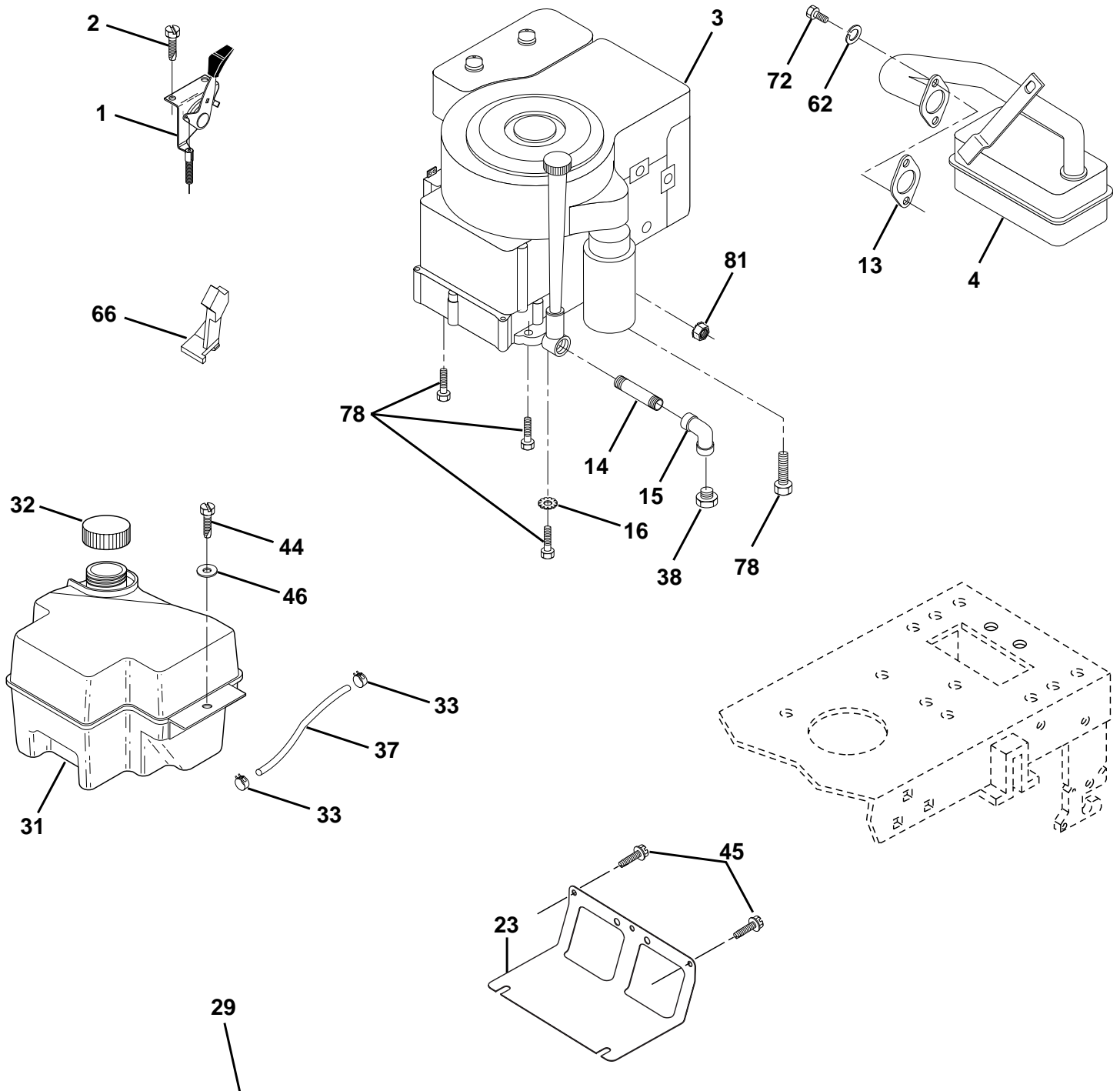


| KEY NO. | PART NO. | DESCRIPTION |
|---------|-----------|---------------------------------|
| 1 | 532059192 | Cap Value Tire |
| 2 | 532065139 | Stem Value |
| 3 | 532106222 | Tire F Ts 15 X 6 0 - 6 Service |
| 4 | 532059904 | Tube Inner Front #35060 |
| 5 | 532138336 | Rim Asm 6" front Silver Service |
| 6 | 532124957 | Fitting Grease |
| 7 | 532124959 | Bearing Flange |
| 8 | 532138337 | Rim Asm 8" rear Silver Service |
| 9 | 532124635 | Tire R Ts 18 x 8.5-8 Service |
| 10 | 532124926 | Tube Rear 9 5 X 8 Service |
| 11 | 532104757 | Cap Axle Blk 1 50 X 1 00 |
| -- | 532144334 | Sealant, Tire (10 oz. tube) |

NOTE: All component dimensions given in U.S. inches
1 inch = 25.4 mm

REPAIR PARTS

TRACTOR- -MODEL NO. ICT15 (JICT15B) PRODUCT NO. 954 13 00-41
ENGINE



OPTIONAL EQUIPMENT
Spark Arrester

REPAIR PARTS

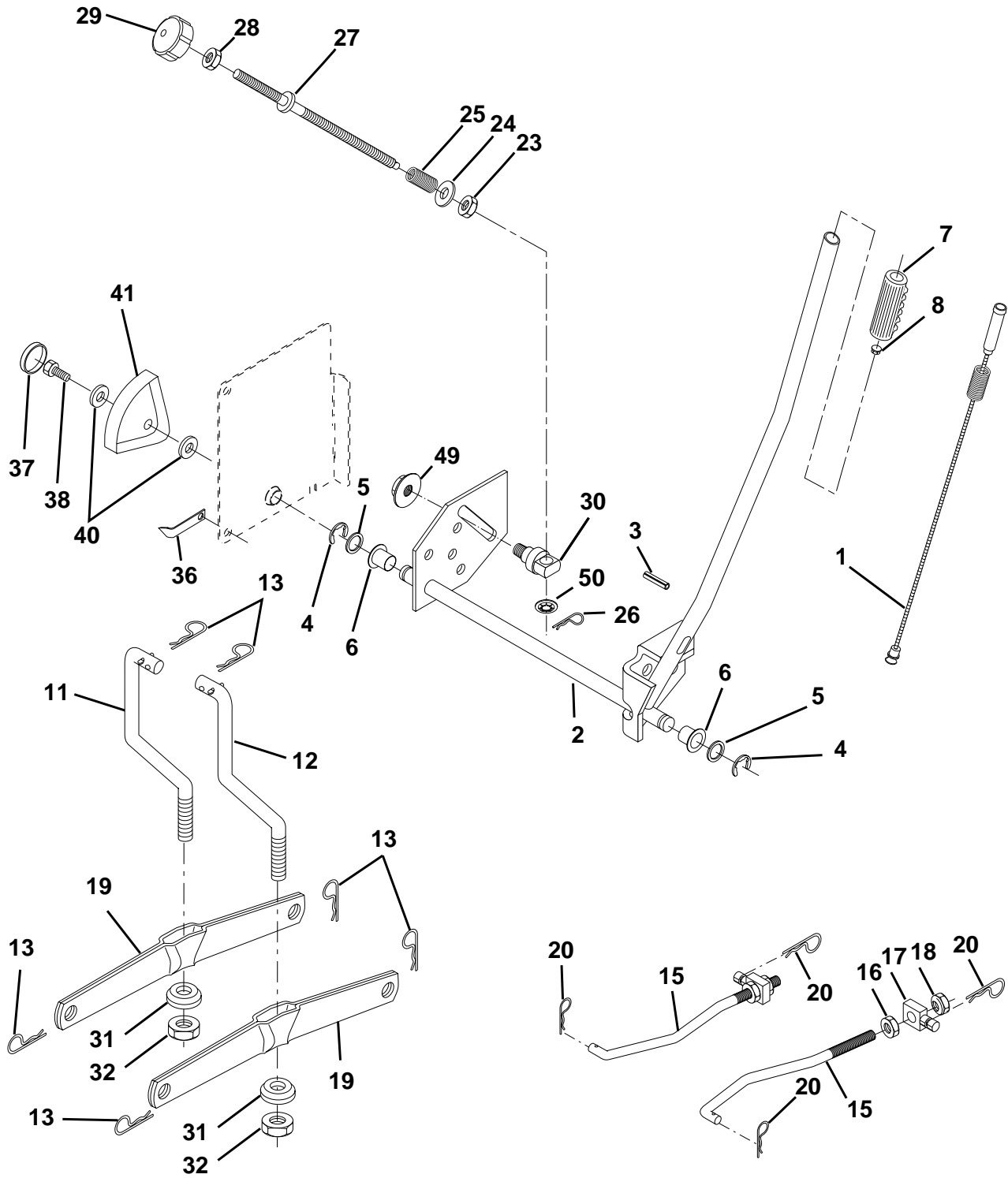
TRACTOR- -MODEL NO. ICT15 (JICT15B) PRODUCT NO. 954 13 00-41
ENGINE

| KEY NO. | PART NO. | DESCRIPTION |
|---------|-----------|--|
| 1 | 532141359 | Control Throt /Ch Lh |
| 2 | 817720410 | Screw Hex Thd Cut 1/4-20x5/8 T |
| 3 | ----- | Engine Briggs Model 287707 (Order Parts from Engine Manufacturer) |
| 4 | 532137352 | Muffler Exhaust B&S Lt |
| 13 | 532165291 | Gasket 1 313 Id Tin Plated |
| 14 | 813280324 | Nipple Pipe 3/8 Npt X 3" |
| 15 | 813200300 | Elbow Std 90 Degree 3/8-18 Npt |
| 16 | 811050600 | Washer Lock Ext Tooth 3/8 |
| 23 | 532169837 | Shield Browning/Debris Guard |
| 29 | 532137180 | Arrestor Spark |
| 31 | 532161911 | Tank Fuel 2.00 Fr |
| 32 | 532140527 | Cap Asm Fule Top Vent N/Lany |
| 33 | 532123487 | Clamp Hose Blk |
| 37 | 532137040 | Line Fuel 20" |
| 38 | ----- | Plug Oil Drain (Order From Engine Manufacturer) |
| 44 | 817670412 | Screw Hexwsh Thdrol 1/4-20x3/4 |
| 45 | 817000612 | Screw Hexwsh Thdr 3/8-16 x 3/4 |
| 46 | 819091416 | Washer 9/32 X 7/8 X 16ga |
| 62 | 810040500 | Washer Lock Hvy Hlcl Spr 5/16 |
| 66 | 532127951 | Stop Throttle 3000 Rpm |
| 72 | 871070512 | Screw Hexhd Cap 5/16-18x3/4 |
| 78 | 817060620 | Screw 3/8-16x1-1/4 Smgml Tap/R |
| 81 | 873510400 | Nut Keps Hex 1/4-20 Unc |

NOTE: All component dimensions given in U.S. inches
1 inch = 25.4 mm

REPAIR PARTS

TRACTOR- -MODEL NO. ICT15 (JICT15B) PRODUCT NO. 954 13 00-41
MOWER LIFT



REPAIR PARTS

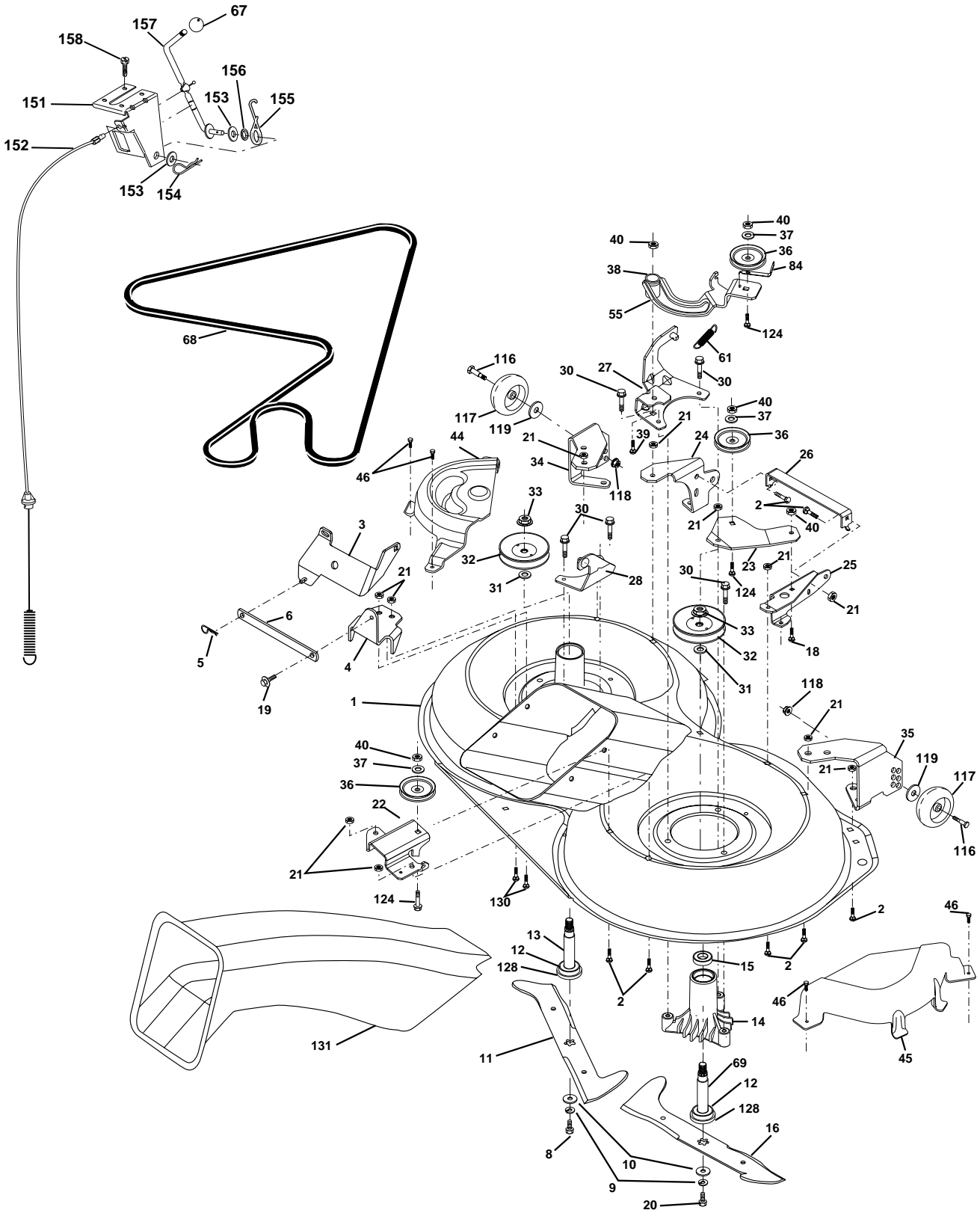
TRACTOR- -MODEL NO. ICT15 (JICT15B) PRODUCT NO. 954 13 00-41
MOWER LIFT

| KEY NO. | PART NO. | DESCRIPTION |
|---------|-----------|-----------------------------------|
| 1 | 532159460 | Washer Asm Inner Spring W/Plunger |
| 2 | 532159471 | Shaft Asm. Lift |
| 3 | 532105767 | Pin Groove |
| 4 | 812000002 | E Ring #5133-62 |
| 5 | 819211621 | Washer 21/32 x 1 x 21 Ga. |
| 6 | 532120183 | Bearing Nylon |
| 7 | 532125631 | Grip Handle |
| 8 | 532124526 | Button Plunger |
| 11 | 532165829 | Link Asm Lift L.H. |
| 12 | 532165831 | Link Asm Lift R.H. |
| 13 | 532124670 | Retainer Spring |
| 15 | 532167253 | Link Front |
| 16 | 873350800 | Nut Jam Hex 1/2-13 Unc |
| 17 | 532130171 | Trunnion Blk Zinc |
| 18 | 873800800 | Nut Lockwasher 1/2-13 Unc |
| 19 | 532139868 | Arm Suspension Mower |
| 20 | 532163552 | Retainer Spring |
| 23 | 532110807 | Nut Special |
| 24 | 819131016 | Washer 13/32 x 5/8 x 16 Ga. |
| 25 | 532124874 | Spring 2-1/8 |
| 26 | 532169484 | Retainer Clip |
| 27 | 532126971 | Rod Adj Lift Zinc |
| 28 | 873350600 | Nut Hex Jam 3/8-16 Unc |
| 29 | 532138057 | Knob Inf 3/8-16 unc |
| 30 | 532150233 | Trunnion Infin Height |
| 31 | 532140302 | Bearing, Pvt. Lift. Spherical |
| 32 | 873540600 | Nut Crownlock 3/8-24 |
| 36 | 532155097 | Pointer Height Indicator |
| 37 | 532123935 | Plug Hole Blk |
| 38 | 817060516 | Screw 5/16-18 x 1 Smgml Tap/R |
| 40 | 819112410 | Washer 11/32 x 1-1/2 x 10 Ga |
| 41 | 532123934 | Scale Ind Height Blk |
| 49 | 532145212 | Nut Hex flange lock |
| 50 | 532110452 | Nut Push Phos &Oil |

NOTE: All component dimensions given in U.S. inches
1 inch = 25.4 mm

REPAIR PARTS

TRACTOR- -MODEL NO. ICT15 (JICT15B) PRODUCT NO. 954 13 00-41
MOWER



REPAIR PARTS

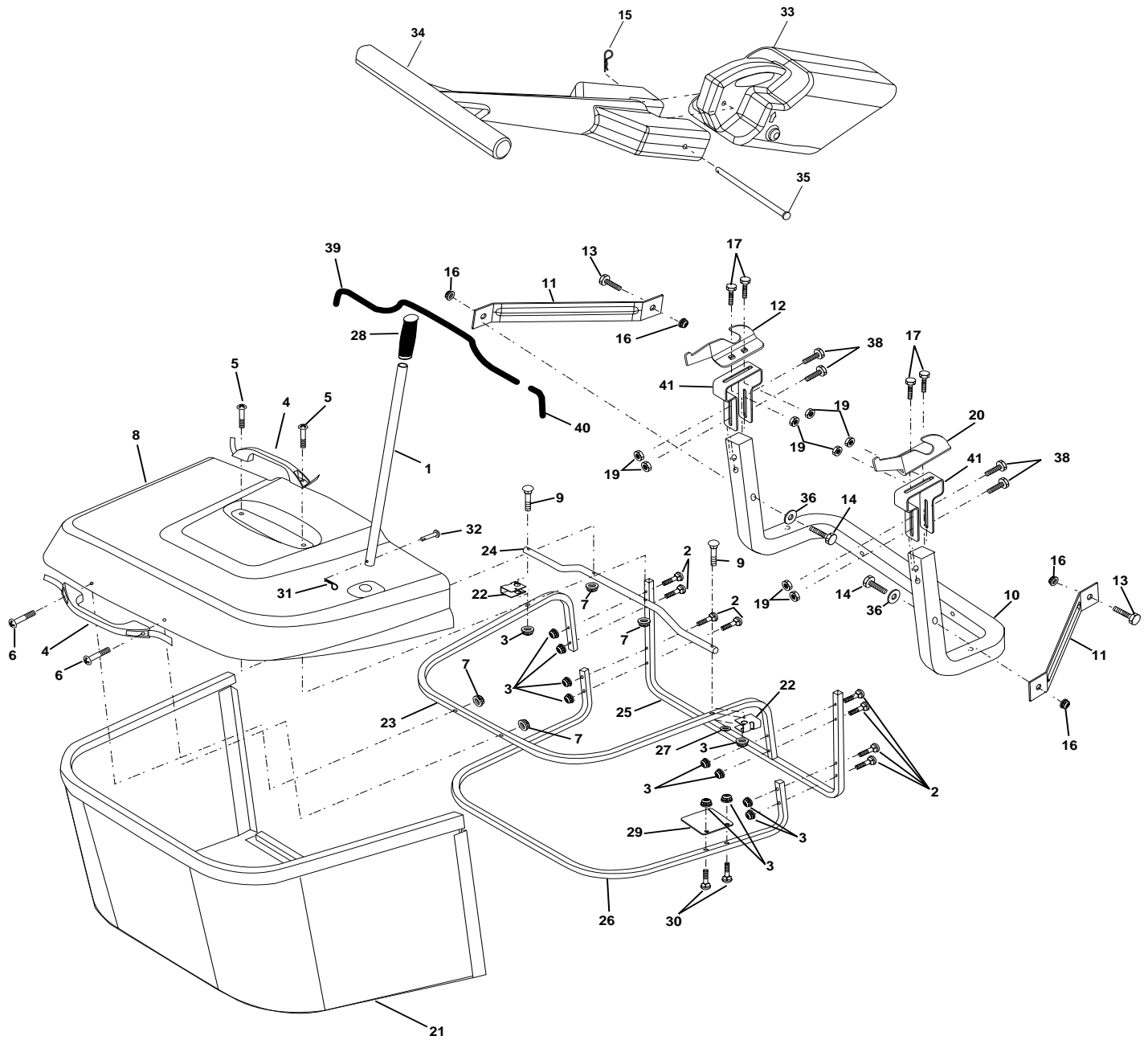
TRACTOR- -MODEL NO. ICT15 (JICT15B) PRODUCT NO. 954 13 00-41
MOWER

| KEY NO. | PART NO. | DESCRIPTION | KEY NO. | PART NO. | DESCRIPTION |
|---------|-----------|-----------------------------------|---------|-----------|----------------------------------|
| 1 | 532169160 | Housing Asm. Mower | 38 | 532169851 | Spacer Hub Arm Idler |
| 2 | 872140506 | Bolt Rdhd Sqnk 5/16-18 Unc x 3/4 | 39 | 872110622 | Bolt Rdhd 3/8-16unc x 2-3/4 Gr 5 |
| 3 | 532165569 | Bracket Asm. S-Bar Chass | 40 | 873680600 | Nut Crownlock 3/8-16 Unc |
| 4 | 532169167 | Bracket Bar Sway Deck | 44 | 532169180 | Cover Mandrel Lh |
| 5 | 532124670 | Retainer Spring | 45 | 532169179 | Cover Mandrel Rh |
| 6 | 532165557 | Bar Sway | 46 | 532137729 | Screw Thd Roll 1/4-20 x 5/8 |
| 8 | 532850857 | Bolt 3/8-24 x 1.25 Gr8 Patched | 55 | 532169849 | Arm Idler |
| 9 | 810030600 | Washer Lock Hvy 3/8 Unplated | 61 | 532165945 | Spring Tension Belt |
| 10 | 532140296 | Washer Hard Blade Mower vented | 67 | 532106932 | Knob Rd 3/8-16 Plstc Thds Blk |
| 11 | 532168720 | Blade 3-1 Lh | 68 | 532169178 | Hex-Belt Mower |
| 12 | 532129895 | Bearing Ball #6204 (Mandrel) | 69 | 532165482 | Shaft Asm W/Lwr Brg Rh Thd CRD |
| 13 | 532137645 | Shaft Asm. W/Lower Bearing | 84 | 532156085 | Keeper Belt Idler |
| 14 | 532128774 | Housing Mandrel Vented (Machd) | 116 | 532137644 | Bolt Shoulder |
| 15 | 532110485 | Bearing Ball Mandrel | 117 | 532133957 | Wheel Gage Donut Wide |
| 16 | 532168721 | Blade 3-1 Rh | 118 | 873930600 | Nut Centerlock 3/8-16 Unc |
| 18 | 872110608 | Bolt Rdhd Sqnk 3/8-16 x 1 Gr5 | 119 | 819121414 | Washer 3/8 x 7/8 x 14 Ga. |
| 19 | 532132827 | Bolt Shoulder 5/16-18 Thd Form | 124 | 872110612 | Bolt Carr Sh 3/8-16 x 1-1/2 Gr5 |
| 20 | 532165484 | Bolt 3/8-24 x 1.25 Gr8 Ptch Lhthd | 128 | 532153390 | Washer Felt |
| 21 | 873680500 | Nut Crown Lock 5/16-18 | 130 | 872110506 | Bolt Rdhdsqnk 5/16-18 Unc x 3/4 |
| 22 | 532169165 | Bracket Idler RR | 131 | 532165661 | Chute Bagger |
| 23 | 532169166 | Bracket Idler RF | 151 | 532169670 | Bracket Clutch Cable |
| 24 | 532169170 | Bracket Suspension LF | 152 | 532170300 | Clutch Cable 42" |
| 25 | 532169171 | Bracket Suspension RF | 153 | 532169674 | Washer Flat 3/8" Tupe B |
| 26 | 532165237 | Brace Support Susp Frt CRD | 154 | 532169675 | Spring Retainer |
| 27 | 532169172 | Bracket Asm. Susp RR | 155 | 532169671 | Spring Retention Lvr Cltch Cab |
| 28 | 532169168 | Bracket Asm. Susp LR | 156 | 532169672 | Spacer Clutch Cable |
| 30 | 532157722 | Screw Thd Rolling Washer Head | 157 | 532169669 | Rod Clutch Cable 3/8" |
| 31 | 532129963 | Washer Spacer Mower Vented | 158 | 817720410 | Screw Hex Thd Cut 1/4-20 x 5/8 |
| 32 | 532153535 | Mandrel Pulleys | - | 532130794 | Mandrel Asm Service |
| 33 | 532137266 | Nut Flg Top Lock Cntr B 9/16 | - | 532165579 | Mandrel Asm CRD Lh Threads SVC |
| 34 | 532169174 | Bracket Gauge Wheel Lf | - | 532170273 | Deck Mower Complete |
| 35 | 532169175 | Bracket Gauge Wheel Rf | | | |
| 36 | 532146763 | Pulley Idler V-Groove Dim 4.25 | | | |
| 37 | 819131316 | Washer 11/32 x 13/16 x 16 Ga | | | |

NOTE: All component dimensions given in U.S. inches
1 inch = 25.4 mm

REPAIR PARTS

TRACTOR- -MODEL NO. ICT15 (JICT15B) PRODUCT NO. 954 13 00-41
BAGGER



REPAIR PARTS

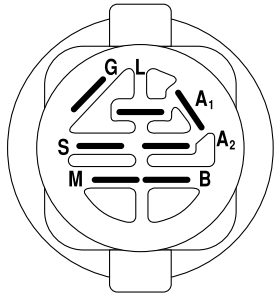
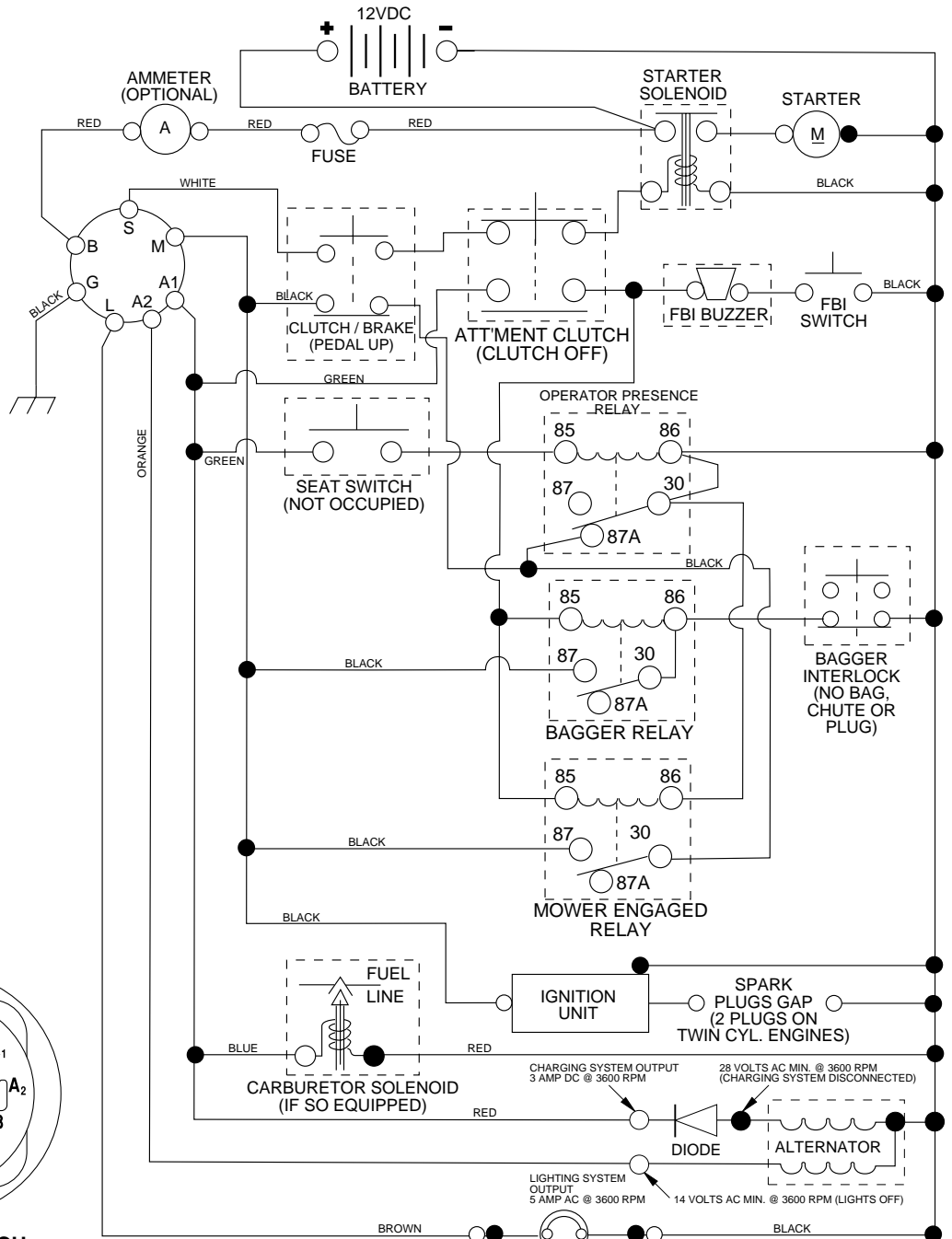
TRACTOR- -MODEL NO. ICT15 (JICT15B) PRODUCT NO. 954 13 00-41
BAGGER

| KEY NO. | PART NO. | DESCRIPTION |
|---------|-----------|---------------------------------------|
| 1 | 532165249 | Tube Handle Bagger CRD |
| 2 | 872140416 | Bolt Carriage 1/4-20 x 2.0 Gr.5 |
| 3 | 532123976 | Nut Lock 1/4 Lge Flg Gr. 5 Zinc |
| 4 | 532169916 | Handle Grab Plastic Black W/Lvrs |
| 5 | 874981024 | Screw Pan Head #10-24 x 1.50 Blk |
| 6 | 874981032 | Screw Pan Hd |
| 7 | 873401000 | Nut Wiz Lock Hex Serr/Hd 10-24 |
| 8 | 532168871 | Cover Bagger Plastic CRD |
| 9 | 872140418 | Bolt Carriage 1/4-20 x 2.25d x Gr.5 |
| 10 | 532169688 | Tube Support Bagger CRD |
| 11 | 532165719 | Bracket Support Upper Bag CRD |
| 12 | 532169685 | Bracket Horiz Adj. Bagger Lh CRD |
| 13 | 872110606 | Bolt Rdhd Sht Sqnk 3/8-16 x 3/4 |
| 14 | 874520640 | Bolt Hex 3/8-16 x 2-1/2 Gr.5 |
| 15 | 532124670 | Retainer Spring |
| 16 | 873900600 | Nut Lock Flg 3/8-16 Unc |
| 17 | 872140506 | Bolt Rdhd Sht Sqnk 5/16 -18 Unc x 3/4 |
| 19 | 873900500 | Nut Lock Hex Flange 5/16-18 |
| 20 | 532169684 | Bracket Horiz Adj Bagger RH CRD |
| 21 | 532165780 | Bag Asm CRD |
| 22 | 532165781 | Bracket Side Bagger CRD |
| 23 | 532165782 | Tube Upper Bagger CRD |
| 24 | 532165783 | Tube Pivot Bagger CRD |
| 25 | 532165784 | Tube Front Bagger CRD |
| 26 | 532165785 | Tube Lower Bagger CRD |
| 27 | 532169692 | Bushing Snap |
| 28 | 532165787 | Grip Handle Black |
| 29 | 532165839 | Plate Stop Bagger handle CRD |
| 30 | 872140410 | Bolt Carriage 1/4-20 x 1 Gr.5 |
| 31 | 532124788 | Retainer Spring 1" Zinc/Cad |
| 32 | 532126875 | Rivet Rd Hd Drilled 3/8 Dia |
| 33 | 532169380 | Plug Mulch |
| 34 | 532165570 | Handle Mulcher 92/107 CRD |
| 35 | 532165572 | Pin Mulcher 92/107 CRD |
| 36 | 819132016 | Washer 13/32 x 1-1/4 x 16Ga |
| 38 | 872010520 | Bolt 5/16-18 x 2.50 |
| 39 | 532169999 | Seal 26" |
| 40 | 532170000 | Seal 7" |
| 41 | 532169683 | Bracket Vert Adj. Bagger CRD |

NOTE: All component dimensions given in U.S. inches
1 inch = 25.4 mm

REPAIR PARTS

TRACTOR- -MODEL NO. ICT15 (JICT15B) PRODUCT NO. 954 13 00-41



IGNITION SWITCH

| POSITION | CIRCUIT | "MAKE" |
|-----------|------------|--------|
| OFF | M+G+A1 | NONE |
| RUN/LIGHT | B+A1 | A2+L |
| RUN | B+A1 | NONE |
| START | B + S + A1 | NONE |

WIRING INSULATED CLIPS
NOTE: IF WIRING INSULATED CLIPS WERE REMOVED FOR SERVICING OF UNIT, THEY SHOULD BE REPLACED TO PROPERLY SECURE YOUR WIRING.

●
NON-REMOVABLE CONNECTIONS

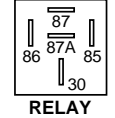
○
REMOVABLE CONNECTIONS

PTO SWITCH

| POSITION | CIRCUIT |
|----------|---------------------|
| OFF | C + G, B + H |
| ON | C + F, B + E, A + D |

HEADLIGHTS

NOTE
 YOUR TRACTOR IS EQUIPPED WITH A SPECIAL ALTERNATOR SYSTEM. THE LIGHTS ARE NOT CONNECTED TO THE BATTERY, BUT HAVE THEIR OWN ELECTRICAL SOURCE. BECAUSE OF THIS, THE BRIGHTNESS OF THE LIGHTS WILL CHANGE WITH ENGINE SPEED. AT IDLE THE LIGHTS WILL DIM. AS THE ENGINE IS SPEEDED UP, THE LIGHTS WILL BECOME THEIR BRIGHTEST.



RELAY

