



Hydrogear 354-0510

Spare parts

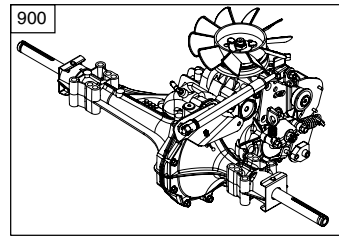
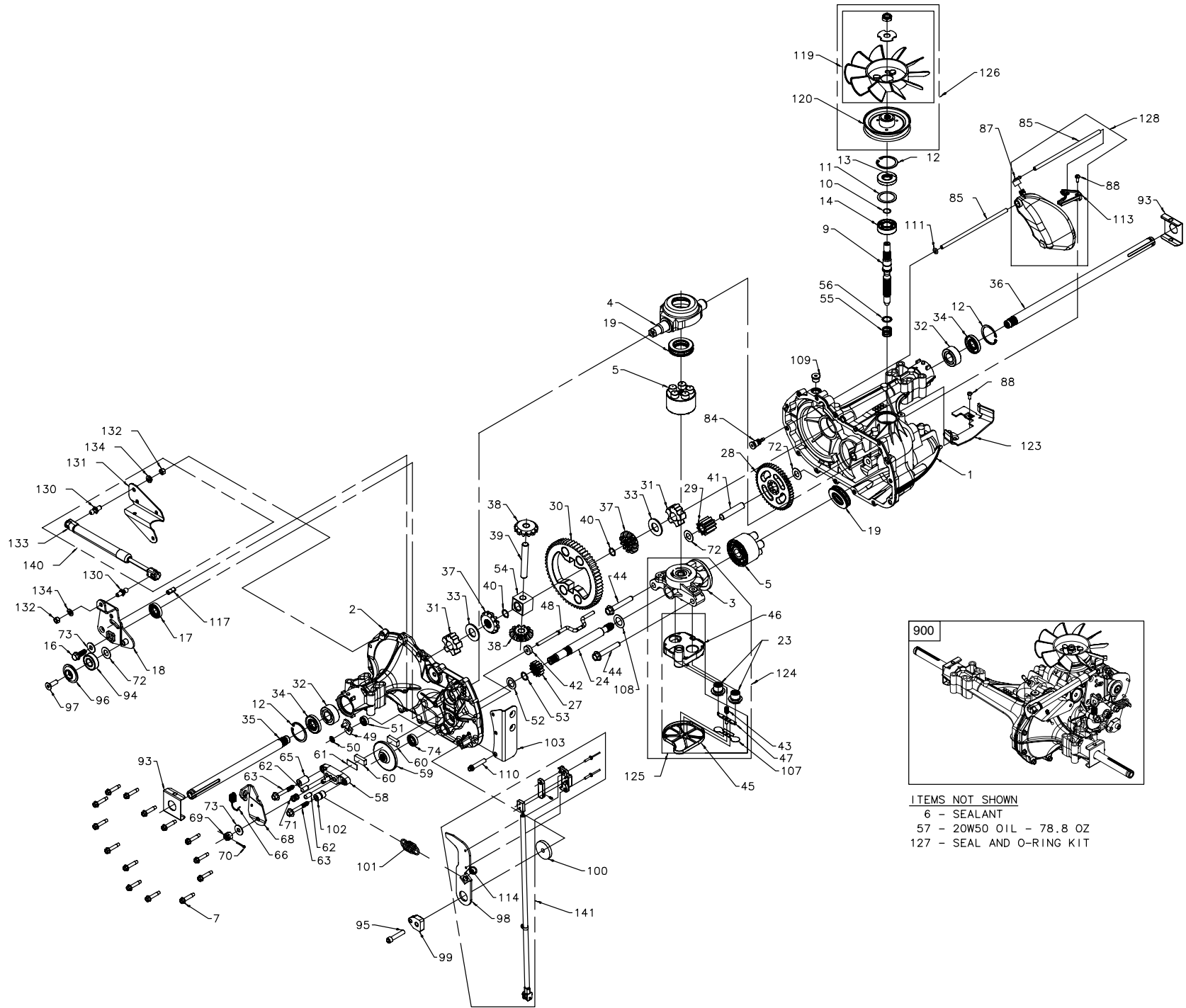
Ersatzteile

Pièces détachées

Reserve onderdelen

Repuestos

Reservdelar



ITEMS NOT SHOWN
 6 - SEALANT
 57 - 20W50 OIL - 78.8 OZ
 127 - SEAL AND O-RING KIT

KEY PART NO. NO.	DESCRIPTION	KEY PART NO. NO.	DESCRIPTION
1	532 17 03-51 Kit, Main Housing: Main Housing, Machined Bushing .865 x .985 x .790	70	532 17 04-16 Pin, Cotter 3/32 x 3/4
2	532 17 03-52 Kit, Side Housing: Side Housing, Machined Bushing .865 x .985 x .790 Bushing .624 x .719 x .562	71	532 17 04-17 Brake Spring
3	532 17 03-53 Kit, Center Section: Center Section, Machined Bushing .707 x .788 x .591	72	532 17 04-18 Washer (310-0750)
4	532 17 03-54 Swashplate, Trunnion Machined	73	532 14 28-84 Washer, Flat
5	532 16 98-98 Kit, Cylinder Block (1000): Block, Cylinder; Piston; Spring, Compression; Washer, Thrust	74	532 17 04-19 Seal, Oil
6	532 17 83-22 Sealant Tube	84	532 17 04-25 Fitting, 5/16 x SAE 5/32 Tube
7	532 17 03-56 Hex Flange Screw 1/4-20 x 1.25	85	532 17 04-26 Hose, Expansion Tank
9	532 17 03-58 Shaft, Input	87	532 40 12-64 Cap, Barbed Vent
10	532 17 03-59 Retaining Ring	88	532 17 83-34 Bolt, Self-Tapping (BDR)
11	532 17 03-60 Spacer	93	532 17 04-31 Spring Clip, Housing
12	532 16 98-70 Retaining Ring	94	532 17 87-83 Bearing, Ball
13	532 17 03-61 Seal, Lip .67 x 1.58 x .276	95	532 17 87-84 Screw, 5/16-24 x 1-1/2 Socket Head Cap (310-3000)
14	532 17 31-58 Bearing, Ball 6203 (BDR)	96	532 17 87-86 Spacer, Locating
16	532 17 03-62 Hex Flange Head Screw 1/4-20 x 1.25	97	532 17 87-87 Screw (310-3000)
17	532 17 03-63 Seal, Lip 18 x 32 x 7	98	532 40 40-27 Arm, Return
18	532 17 87-81 Arm, Control	99	532 17 87-92 Puck, Adjusting
19	532 17 31-59 Bearing, Thrust (10cc)	100	532 17 87-93 Washer, .325 OD x 1.6 ID x .15 Thick
23	532 17 04-20 Check Plug Assembly, .027 Washer	101	532 17 87-94 Spring, Extension
24	532 17 03-66 Shaft, Motor	102	532 17 87-95 Spacer, .56 OD x .26 ID x .87
27	532 17 03-67 Gear, Pinion, 13 Teeth	103	532 40 40-28 Bracket, Torque
28	532 17 03-68 Gear, 1 OT / 48 Teeth	107	532 17 04-32 Deflector
29	532 17 03-69 Gear, 1 OT Jackshaft	108	532 17 04-33 Washer, Motor Shaft .71 ID x 1.15 OD x .03 Thick
30	532 17 03-70 60 Tooth Bullgear	109	532 17 04-34 Plug, Straight Thread 9/16-18
31	532 17 03-71 Sleeve Bearing .75 x 1.75 X.625	110	532 16 11-59 Screw, Torx Head 5/16-18 (310-3000)
32	532 17 03-89 Sleeve Bearing (Outboard) .75 x 1.575 x .625	111	532 17 04-35 O-Ring .7 x .301 ID
33	532 14 29-91 Washer	113	532 17 04-37 Bracket, Support Expansion Tank
34	532 17 03-90 Lip Sseal, Axle Shaft	114	532 17 87-97 Spring Guide
35	532 17 03-91 Shaft, Axle (Keyed, R.H.)	117	532 17 87-99 Pin, Spring 5/16 x.75
36	532 17 03-92 Shaft, Axle (Keyed, L.H.)	119	532 19 10-31 Kit, Fan: Washer; Nut; Fan, 7 inch; Hex Locknut 1/2-20 (Nylon Insert)
37	532 40 12-60 Miter Gear (Splined)	120	532 17 04-40 Pulley
38	532 40 12-61 Miter Gear	123	532 40 12-65 Belt Keeper
39	532 15 08-09 Differential Shaft (310-0750)	124	532 19 10-33 Center Section Filter Bypass Assembly: Center Section; Base, Filter w/Poppet; Check Plug Assembly; .027 Washer; Spring, Bypass; Actuator, Bypass; Deflector, Bottom; Filter bushing, .707 x .788 x .591
40	532 17 03-93 Retaining ring	125	532 17 04-45 Kit, Filter Bottom: Filter Spring; Bypass Actuator; Bypass Deflector; Base, Filter w/Poppet
41	532 17 03-94 Pin, Jackshaft	126	532 17 04-46 Kit, Fan/Pulley: Hex Jam Nut 1/4-20 (Nylon Insert); Pulley; Washer, Slotted, .53 x 1.63 x .06; Fan, 7 inch;
42	532 17 03-95 Magnet, Ring	127	532 17 04-47 Kit, Seal: Lip Seal .67 x 1.58 x .276; Lip Seal .18 x 32 x 7; Lip Seal .706 x 1.584 x .25; Lip Seal .741 x .250 x .250; TC Oil Seal .625 x 1.0 x .25; O-Ring .07 x .301 ID
43	532 17 03-96 Spring, Bypass	128	532 40 12-66 Kit, Expansion Tank: Tank, Expansion; Assembly Cap, Barbed Vent.;
44	532 15 07-97 Bolt 3/8-24 x 2-1/2		Bolt, Self-tapping 10-32 x 1/2; Bracket, Support; Expansion Tank Hose; Expansion Tank
45	532 17 03-97 Filter	130	532 17 88-02 Stud, Threaded Ball
46	532 17 03-98 Base, Filter	131	532 17 88-03 Bracket, Cruise/Damper
47	532 17 03-99 Actuator, Bypass	132	532 17 88-04 Nut 5/16-18
48	532 17 04-00 Rod, Bypass Actuator	133	532 18 42-27 Damper
49	532 19 65-99 Arm, Bypass	134	532 17 88-08 Washer, 5/16 Lock
50	532 17 04-02 Retaining Ring, .25 External	140	532 19 10-30 Kit, Damper: Stud, Threaded Ball; Bracket, Cruise/Damper; Hex Nut 5/16-18 NC;
51	532 17 04-03 Seal, Lip .741 x .25 x .25		Damper; Washer, Helical Spring, Lock, 5/16
52	532 17 04-04 Washer, Flat 0.050" (210-1000)	141	532 40 40-30 Kit, RCS: Arm, Return Spring; Guide, Switch; RCS Activator; RC Switch Spring;
53	532 17 04-05 Retaining Ring		RCS Switch Retainer; RCS Switch; Rivet, 5/32
54	532 17 04-06 Bearing, Center Block	900	532 40 05-05 Transaxle
55	532 14 29-77 Spring, Helical Compression		
56	532 14 29-78 Washer, Block Thrust		
57	- - - 20VV-50 Oil		
58	532 14 29-29 Kit, Brake Yoke		
59	532 17 04-08 Rotor, Brake		
60	532 14 28-83 Brake Puck		
61	532 14 28-82 Brake Puck Plate		
62	532 17 04-09 Pin, Brake Actuating		
63	532 17 04-10 Hfhcs 1/4-20 x 2 w/Patch, Special Flange		
65	532 17 04-11 Spacer, Brake Torsion Spring		
66	532 18 93-86 Spring, Brake Arm Bias		
68	532 40 40-26 Arm, Brake, RH		
69	532 17 04-15 Nut, Castle 5/16-24		

NOTE: All component dimensions given in U.S. inches.
1 Inch = 25.4 mm